



The IntelComp Living Lab approach

Elke Dall, Centre for Social Innovation

27 April 2021

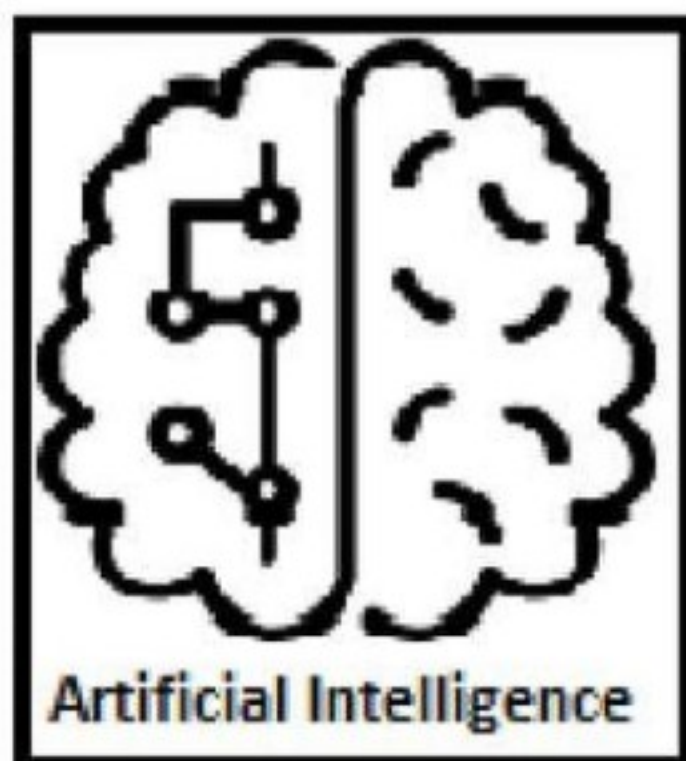
Opening event



Co-creating and testing the IntelComp platform tools in a Living Lab approach

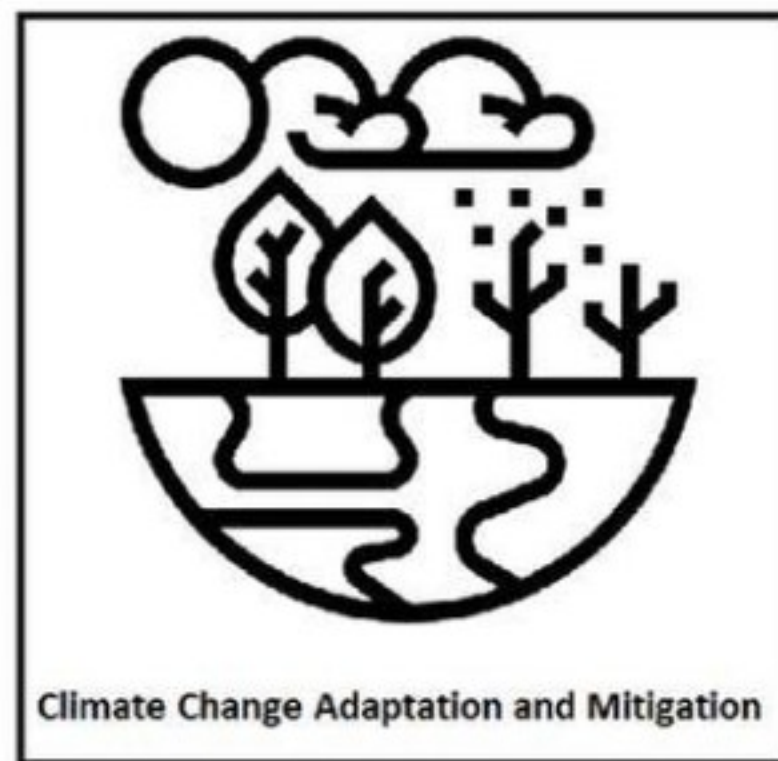
Supporting the development of STI policies

Artificial Intelligence



Lead by: **SEDIA**

Climate Change



ARC

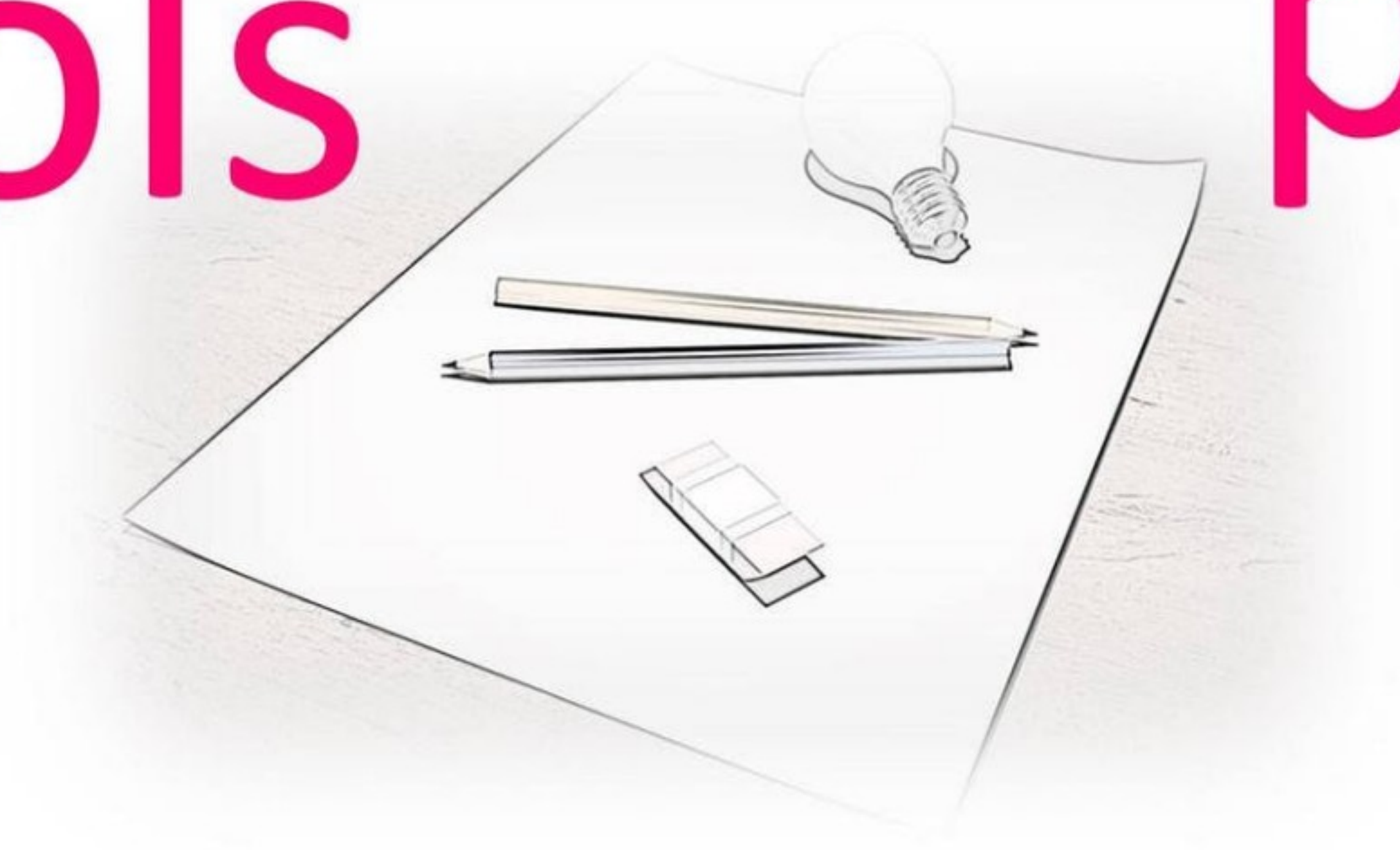
Health



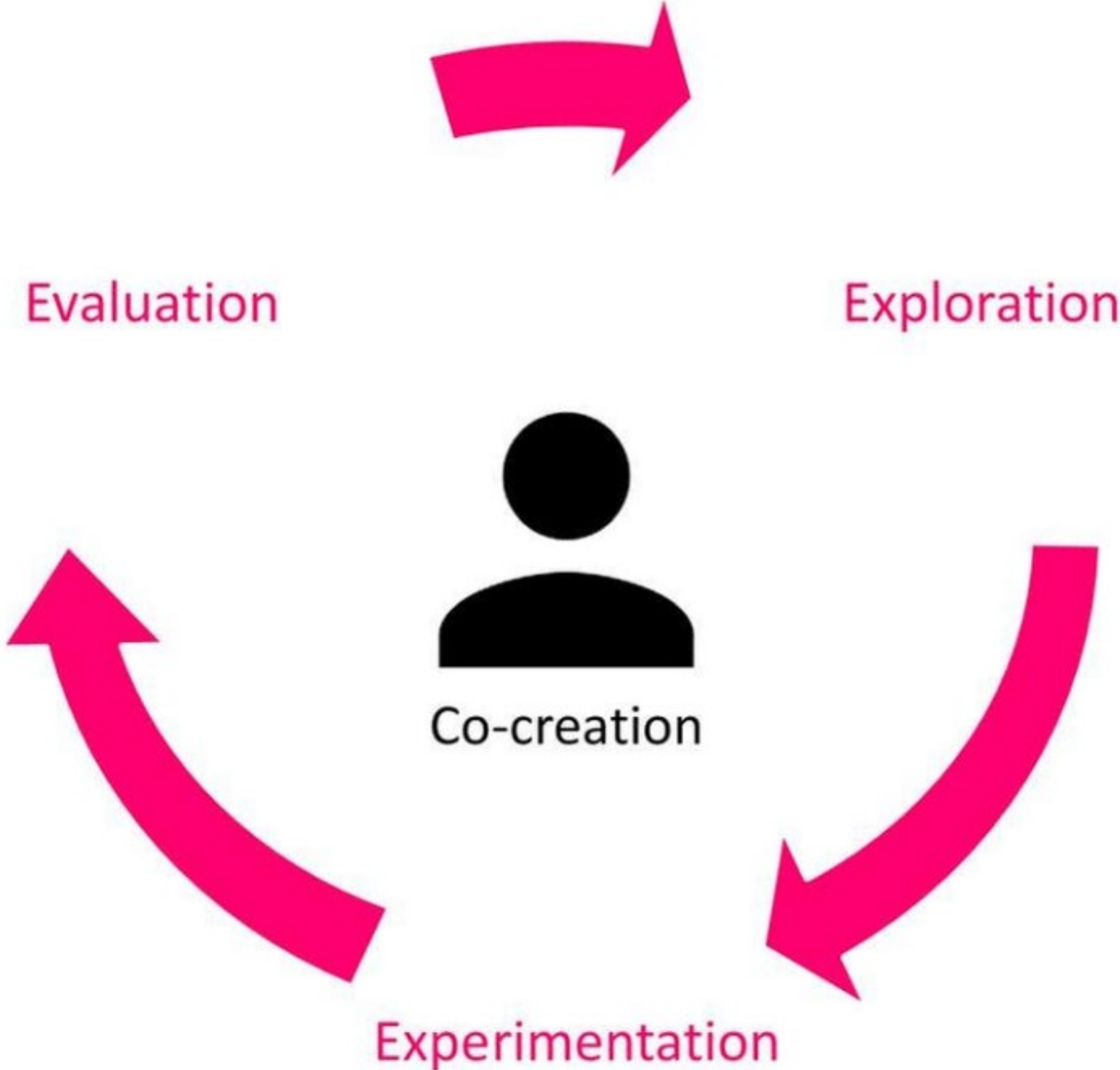
OST

What the Living Labs will do

tools policies

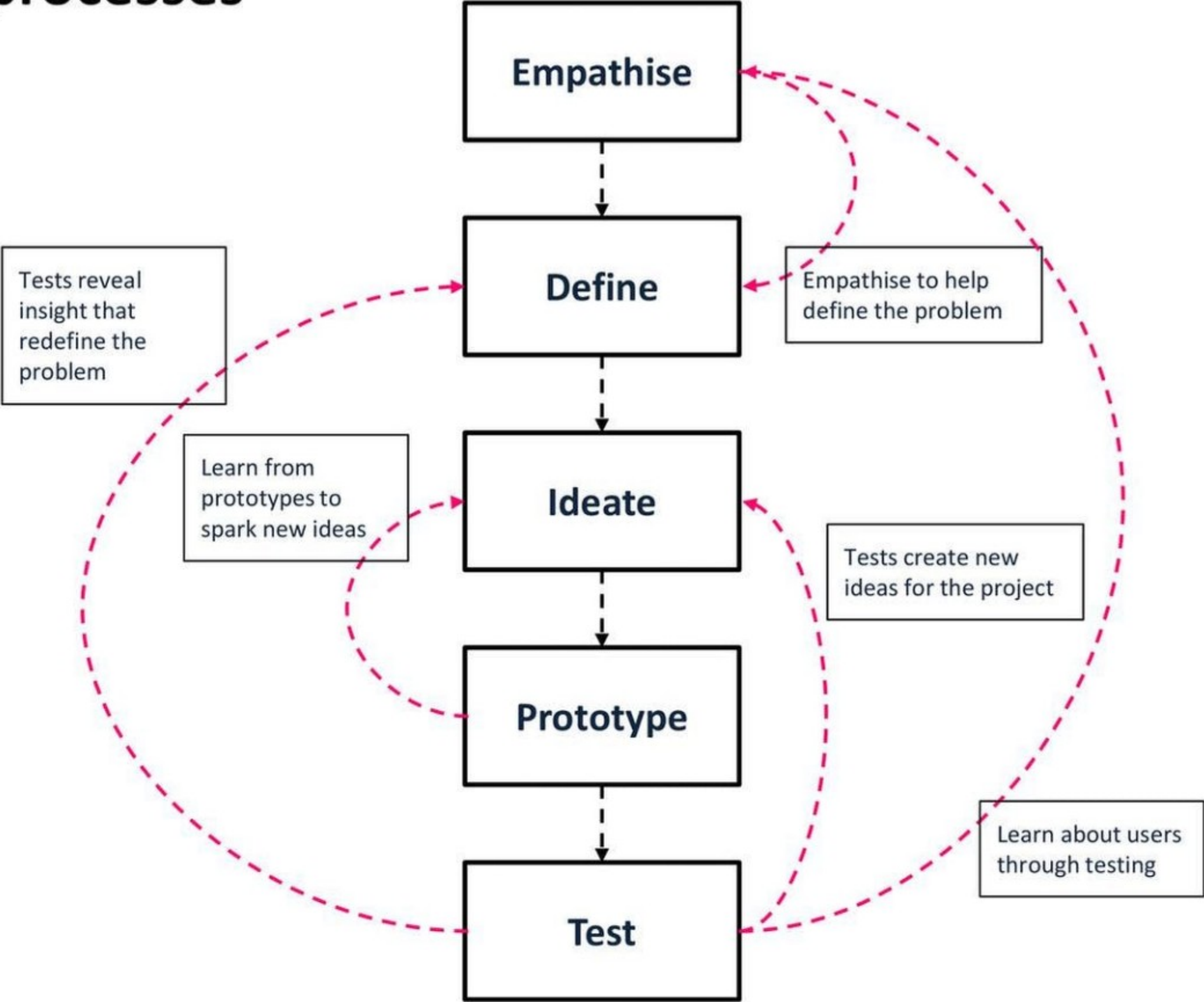


Putting the users in the centre



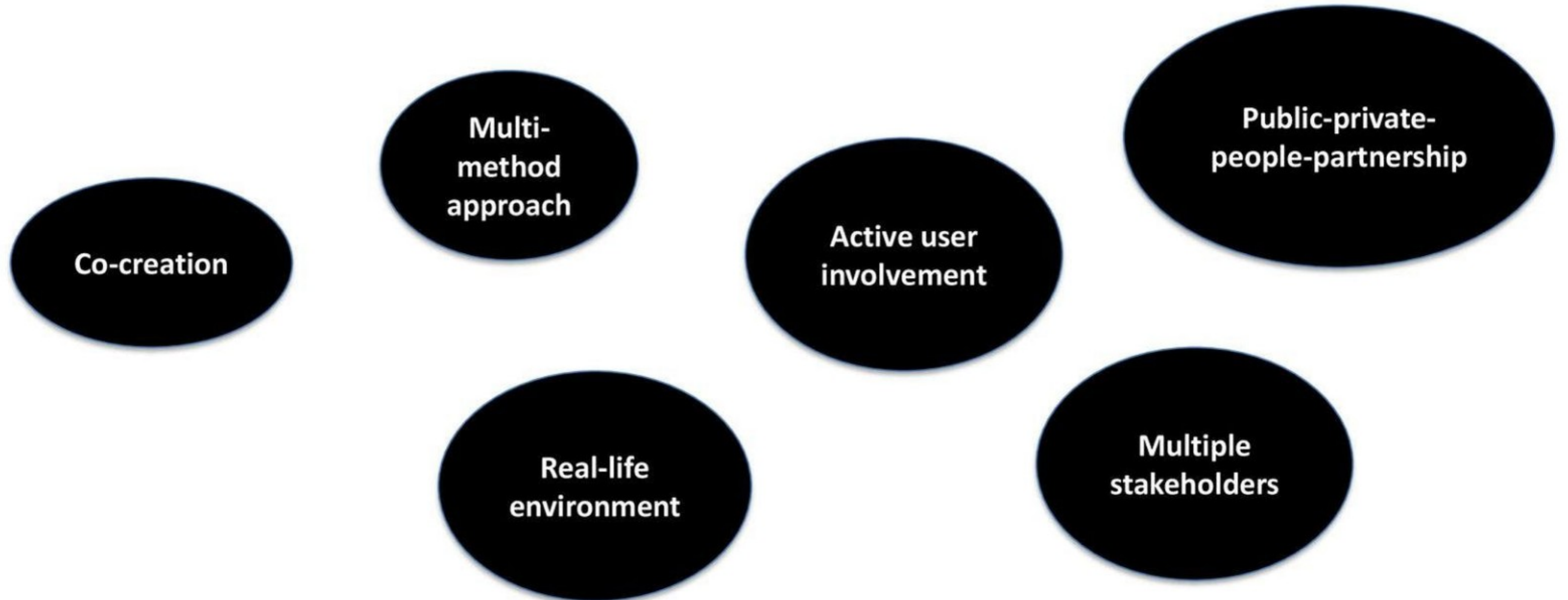
public administration; academia/industry; civil society/citizen

Use iterative processes



Testing the IntelComp platform in a Living Lab approach

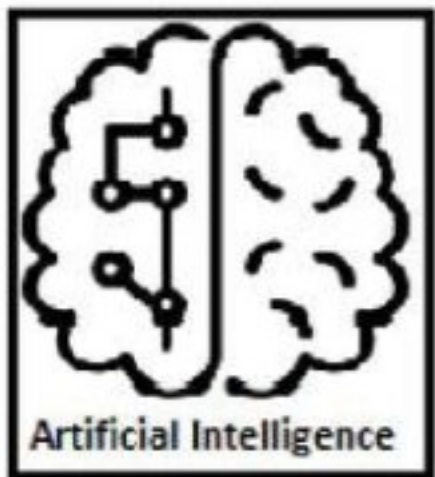
- User-centred open innovation ecosystem
- Systematic user co-creation



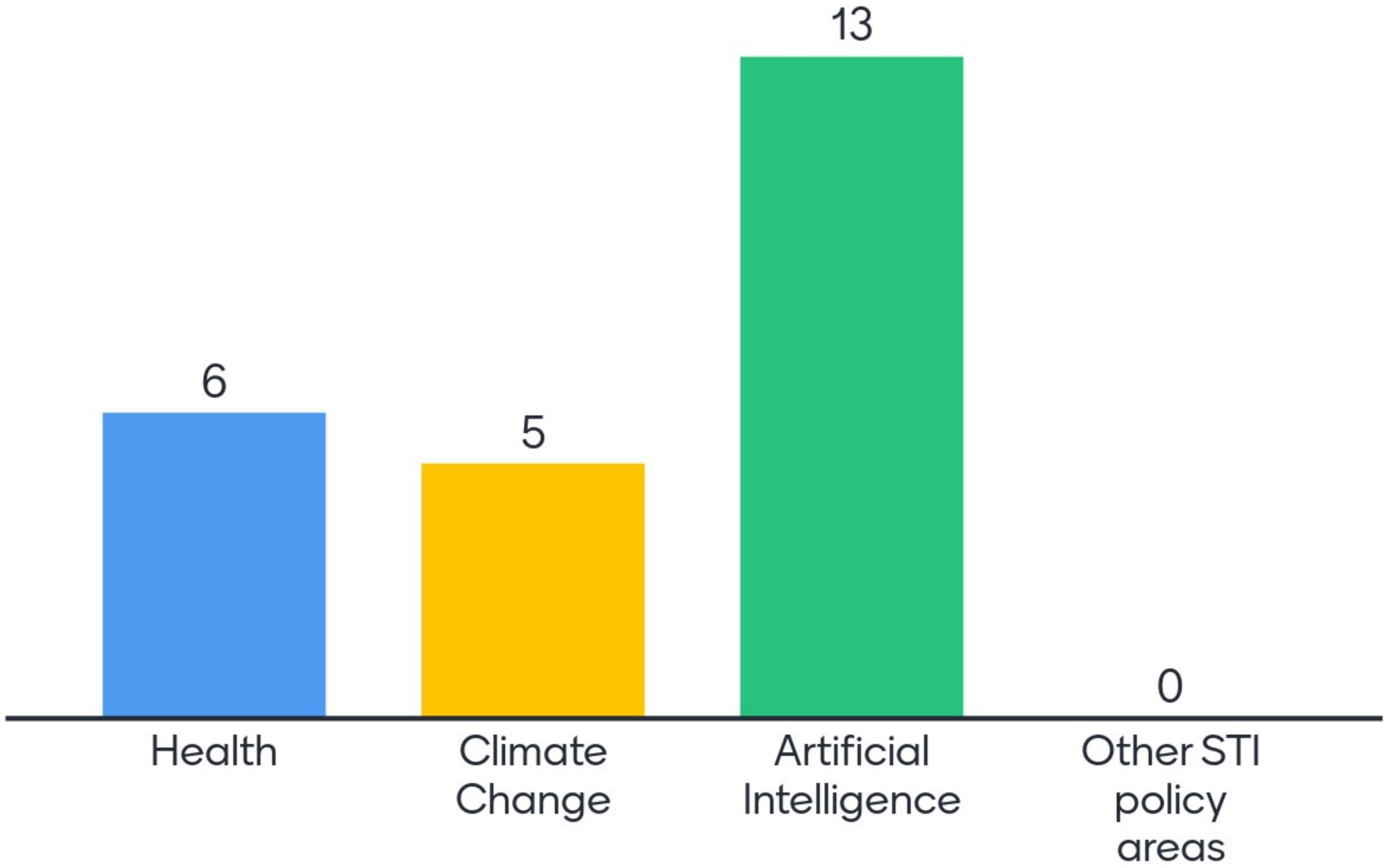
IntelComp helps public administrators address key STI policy questions

For example:

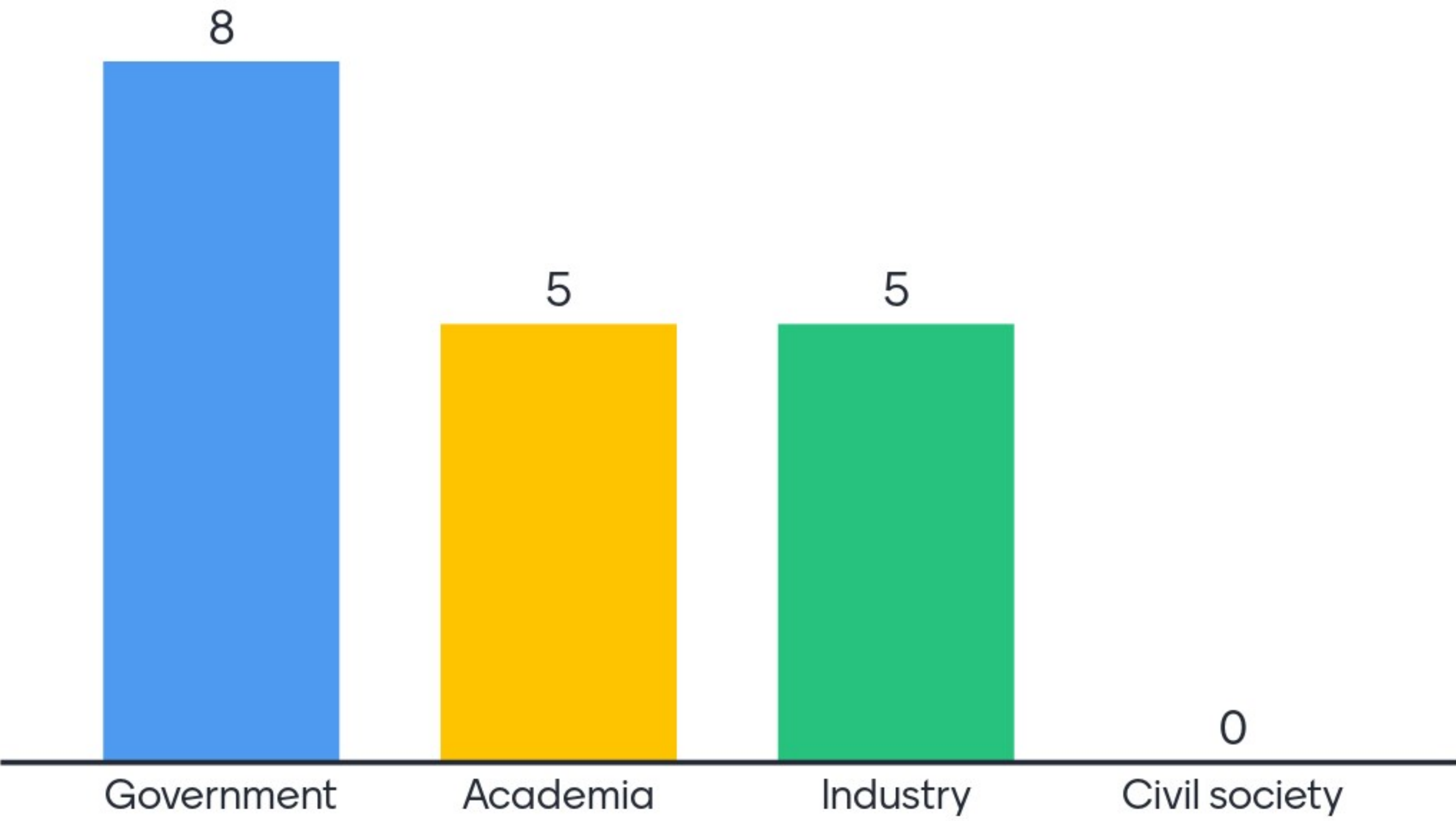
- Identifying and strengthening national competences on **how to prioritize investments in [AI] research and development** (which domain, which actors, how to collaborate);
- Unleashing AI resources by **correlating trends/practices/actors** for producing and accessing high quality data, models and computing; fostering trust in applications of AI by **evaluating relevance of existing legal and regulatory approaches** overseeing the use of AI and addressing gaps when needed;
- **Promoting international collaborations** for ensuring strategic and technical engagement with like-minded organizations that have established infrastructure, resources, and actionable plans for advancing AI policy activities.



Which of the areas are you most interested in?



Which stakeholder group are you affiliated with?



A large group of skydivers in various colorful suits are falling from the sky, arranged in a circular pattern that resembles a globe. The background is a clear blue sky.

BECOME PART OF OUR COMMUNITY OF STAKEHOLDERS

Monica Caballero (everis)

27 April 2021

Opening event

Would you like to be an active part of the **IntelComp Open Innovation process?**

- We are establishing a **community of external stakeholders** in STI policy making to support us and participate in the co-creation activities of the project.
- **Who can be part of it?:** Policy maker, public administration responsible of STI related policy, STI funders, Academy, industry interested in STI policies in the AI, Health or Climate domains.
- **Why to join?**
 - **Learning more about the project** that will guide innovation policies in Europe
 - Knowledge on **how to leverage cutting-edge technologies for co-creating STI** policies
 - **Get your voice heard-** Highlight your needs to developers and researchers
 - Be part of our co-creation process and **influence the development** of the IntelComp platform to meet your real needs.
 - (Selected users) **Early access to the IntelComp platform** in a Living Lab environment to support you on answering your policy needs.
 - Opportunities for **collaboration with other stakeholders**



Support our innovative co-creation process

- **Why do we expect from you?**
- There are numerous ways at different levels you can engage with us:
 - Support to **spread the word** about the project
 - Participate on **Consultation activities** and Surveys
 - Enroll and actively participate in **future Living Labs** with other stakeholders to co-design STI policies.
- **First opportunity to collaborate: 1st Consultation workshops**
 - Present, validate and prioritize the findings of the desk-research on policy framework: relevance and appropriateness of policy questions around the three domains.



Become an interested member: **Register!**

Receive Project communications, updates on **collaboration opportunities** and events:

<https://intelcomp.eu/registration-collaborations>

Register and tell us about your domain of interest!
By registering you show us your interest in collaborating with us*

*Participation is free and there are no mandatory requirements of Stakeholder members



Would you like to be part of the IntelComp community?

